

# Burgess®

## Electric Professional Fogger



**⚠ CAUTION: Read and follow all instructions**

Do Not Return This Fogger To The Store

For Help, Information or Parts, Call : 1-800-311-9903

**The Fountainhead Group, Inc.**

23 Garden St., New York Mills, NY 13417

1-800-311-9903

[www.TheFountainheadGroup.com](http://www.TheFountainheadGroup.com)

## SAFETY PRECAUTIONS

- Use outdoors only. Fire or explosion may occur if used in confined area.
- Barrel is hot when plugged in. Allow to cool before touching .
- Never secure trigger in a permanent “ON” position. Overheating may occur.
- Release trigger immediately if a flame occurs in the barrel.
- Do not fog near combustible materials.
- Fog produced is flammable. Do not fog near open flames such as gas burner or pilot light.
- Fog produced may be toxic. Do not fog around food, eating utensils, humans, pets or animals. DO NOT INHALE FOG.
- Use only 3-wire, 10, 12 or 14-gauge extension cord, suitable for outdoor usage. Never defeat grounding feature. Failure to comply may result in electrical shock and /or fire.
- Always unplug fogger when not in use. Never leave unattended.
- The use of other insecticides or chemical may damage your fogger and could result in unsafe conditions. Use only oil base chemicals formulated for thermal fogging.

## CAUTION

- Before operating - Read Instruction Manual.
- Follow chemical manufacturers instructions carefully.
- Examine extension and unit cord before each usage for signs of degrading. Do not use if damaged.
- Do not have lighted materials, such as cigarettes, in area while filling or using fogger.

### HOW AND WHY FOGGING WORKS

At the touch of the trigger, an electric pump forces liquid through a brass atomizing nozzle into a thermostatically controlled heating chamber in the barrel. The chemical is vaporized instantly, and a cloud of fog surges out of the barrel.

The secret of fogging’s success lies in its ability to reduce chemical into microscopic particles averaging 15 microns in diameter (a micron measures 1/25,000 an inch). By contrast, mist droplets range from 50 to 125 microns and spray droplets more than 125 microns.

The tiny particle size allows the fog to spread and penetrate area being treated.

### GETTING THE MOST FROM YOUR FOGGER

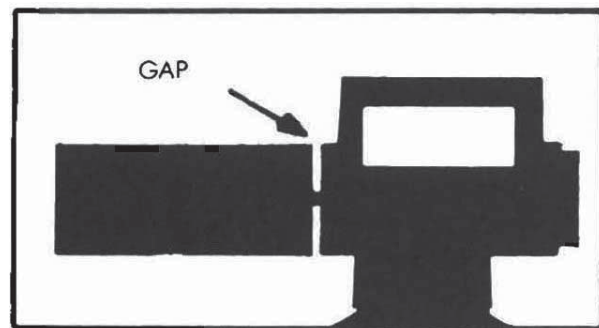
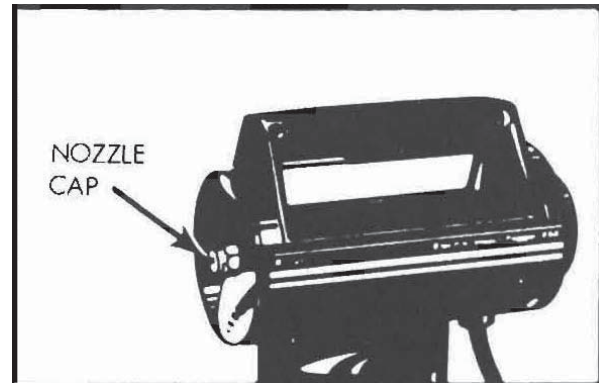
A dry fog is recommended. The dryer the fog the smaller the particles. Dryness of fog is controlled by the rate of flow of chemical through the heating chamber. This rate of flow is controlled by turning the adjustment knob clockwise for a dry fog, counterclockwise for a wetter fog.

Wet fog deposits a film or residue. This effect may be desired on trash cans, pavements, or building foundations. **Never use wet fog on plants, shrubs or carpeting where the oily residue could have damaging effects.** Keep the fogger about 10 feet away from the area being treated and let the fog drift in the desired direction. At this distance, any non-vaporized particles of chemical will settle to the ground.

# Operation

## Assembling

1. Before each use, be sure nozzle cap on fogger is tightened securely.
2. With fogger unplugged, attach barrel by positioning the prongs directly in line with the slots provided for them in the housing. Push the barrel firmly into place being careful not to twist or bend the prongs. Do not leave any gap between housing and barrel.
3. After filling container with (oil based) chemical, be sure it is fastened securely to lid.



4. Plug in cord to the proper grounded electrical outlet (voltage is indicated on fogger housing.)
5. Extension cords must be 3-wire, 10, 12 or 14-gauge. Long lengths of lighter cord will not conduct the necessary current to the heating chamber, and may result in insufficient heating and insecticide leakage from the end of the barrel. Over heating of the extension cord may also occur.

- CAUTION:**
- Use only extension cords which are intended for outdoor use and have an electrical rating not less than the rating on the fogger nameplate.
  - Examine your extension cord carefully before using. Do not use if damaged.
  - Do not abuse the extension cord and do not yank on any cord to disconnect.
  - Keep the cord away from heat and sharp edges.

## **Fogging - For Use Outdoors Only**

1. Allow the fogger to pre-heat for two minutes or more.
2. Carry the fogger as you would a suitcase, holding it about three feet off the ground and away from your side.
3. Pull the trigger, conveniently located on the underside of the handle, to start the unit operating. Release trigger to stop,
4. Turn adjustment knob clockwise to obtain a dry fog. With a dry fog, you should see no moisture on a 8" x 12" minimum piece of paper or cardboard when you pass it through the fog about a foot from the barrel. Be careful not to place hand in front of the barrel.
5. For continuous use (more than one minute) be sure the unit is adjusted for a dry fog or liquid will drip from end of barrel.

- WARNING:**
- Under certain conditions, a flame may be produced at either end of the barrel. If this occurs, **release trigger immediately** and flame will extinguish. Do not attempt to extinguish by blowing it out, smothering it or submersing in liquid, Turn adjustment knob for a dryer fog before resuming operation.
  - The fog produced is toxic and flammable.
  - Do not smoke during use or filling.
  - Keep away from food, humans, pets, and animals.
  - Fire or explosion may occur if used in confined areas.
  - Do not fog near open flame or heated surfaces.

## **PREVENTIVE MAINTENANCE**

### **Cleaning**

Be sure to spray clean water through the unit after each use and rinse out container thoroughly. Lubricate according to instructions below. Wipe unit with a dry cloth after each use. Some chemicals, when vaporized, may leave carbon or other residue inside the barrel. It is advisable to clean out the barrel with a rag or soft bristled brush occasionally to prevent accumulation of any foreign matter.

### **Lubrication**

Oil-based chemicals provide lubrication for the fogger's pump and atomizing mechanism, and little additional maintenance is necessary. If fogger is used as a sprayer for water-base formulations, spray kerosene or oil-base material through the sprayer unit for lubrication.

### **Storing**

Keep the unit in dust-free storage to prevent accumulation of dirt in its mechanism. Never store unit with chemicals in the container.

### **Clogging**

Foreign matter in the liquid can result in clogging the pump or nozzle. To insure proper operation it is recommended that clean material be used, or that it be filtered through cheese cloth if foreign matter is present.

## TROUBLE-SHOOTING GUIDE

Symptom	Probable Cause	Corrective Action
Poor fog quality	<ol style="list-style-type: none"> <li>1. Low Voltage.</li> <li>2. Too light a gauge extension cord.</li> <li>3. Poor grade fogging material.</li> </ol>	<ol style="list-style-type: none"> <li>1. Change to another power source.</li> <li>2. See page 2, Item #5.</li> </ol>
Dripping	<ol style="list-style-type: none"> <li>1. Nozzle loose.</li> <li>2. Excessive chemical output.</li> <li>3. Worn out Barrel Assembly.</li> <li>4. Other-see poor fog quality.</li> </ol>	<ol style="list-style-type: none"> <li>1. Tighten securely.</li> <li>2. Adjust to drier output.</li> <li>3. Replace with factory replacement assembly only.</li> </ol>
No fog- No spray (Unit vibrates)	<ol style="list-style-type: none"> <li>1. Nozzle obstructed.</li> <li>2. Pump plugged.</li> <li>3. No power at plug.</li> </ol>	<ol style="list-style-type: none"> <li>1. Remove and clean nozzle with sharpened wooden toothpick. <b>DO NOT USE METAL OBJECT.</b></li> <li>2. Insert toothpick into hole at bottom of pump and pick out foreign material.</li> <li>3. Check electrical connections, fuse and extension cord.</li> </ol>
No fog-Spray Ok	<ol style="list-style-type: none"> <li>1. Worn-out Barrel Assembly.</li> <li>2. Water base insecticide.</li> </ol>	<ol style="list-style-type: none"> <li>1. Replace with factory replacement assembly only.</li> </ol>

## PARTS LIST

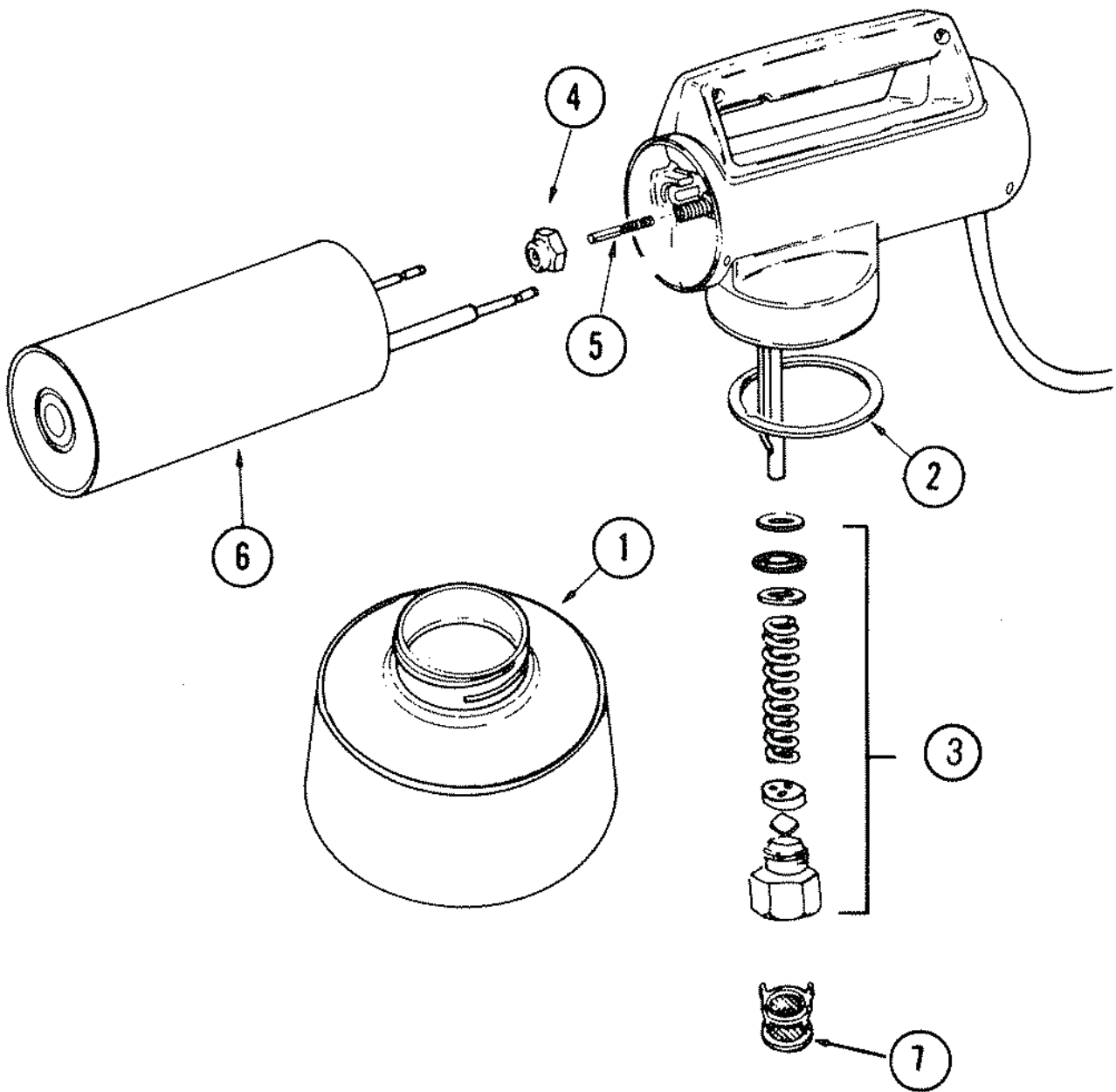
Key No.	Model No.	Part Number	Description
1	982	161221	Spun aluminum container, 3qt. capacity ( This container can be used on 982 models only )
2	982	161160	Container Gasket
3	All Models	1602011C	Pump Parts Kit
4	All Models	161900	Brass Nozzle
5	All Models	161189	Spinner and Spring Assembly
6	982	161222	Barrel Assembly, Complete 115V
		161214	Barrel Assembly, Complete 230V
7	All Models	164300	Strainer
		190282	Insecticide, 16 oz
		190255	Insecticide, 32 oz
		190256	Insecticide, 64 oz

Replacement parts available from:

Customer Service Department  
 The Fountainhead Group  
 23 Garden Street  
 New York Mills, NY 13417  
 (315) 736-0037  
 (800) 311-9903  
 Email: [Info@TheFGI.com](mailto:Info@TheFGI.com)  
[www.TheFountainheadGroup.com](http://www.TheFountainheadGroup.com)

### When ordering parts, be sure to:

1. Give your name and complete return address.
2. Specify your Model No. and the complete name and number of the part you want. Refer to parts order form for pricing.
3. Empty all Insecticide or other liquids from container.



# Limited WARRANTY

---

We warrant that each product sold by us will be free from defects in material and workmanship for a period of 90 days from the date of shipment by us. We make no other express warranties, and all implied warranties, including fitness and merchantability, are limited to 90 days from date of shipment by us. Within the warranty period, we will repair or replace any part found to be defective upon our examination but will not pay shipping costs or other expenses. To obtain warranty service, write us at The Fountainhead Group, 23 Garden Street, New York Mills, New York 13417 or call prepaid. Area Code 315/736-0037. Merchandise may not be returned without prior permission and must be returned to us with freight prepaid. This warranty service is an exclusive remedy and we are not responsible for any consequential or incidental damages or injury to person or property. This warranty shall not apply to any product which has been subject to misuse, negligence or accident, or been damaged in shipment, or misapplied, or which has been modified or repaired by unauthorized persons. This warranty only applies to products owned by persons purchasing directly from us or from our approved distributors and merchandisers. The right is reserved to incorporate subsequent design or parts changes after publication and without re-use of descriptive literature or catalogs.

**NOTE:** Limitations on duration of implied warranty and/or consequential damages may not apply to you if your state does not permit them. This warranty gives you specific legal rights in addition to rights which you may have under state law.

**The Fountainhead Group**  
23 Garden Street  
New York Mills, NY 13417